

The Sacred Heart Language College

Welcome to
the Year 11
Community Evening





Liturgy

God of wisdom

God of love

Teach us to understand our children

And may they understand us,

That we may learn from each other.

Make us sensitive,

Make us patient,

Make us attentive.

As we grow together in love

Let us grow in awareness of You.

That we may know your blessing

Upon us and upon our children.

Amen

The Sacred Heart Language College

Mathematics

Ms. Orokpo





Why is Mathematics so important?

Mathematics is everywhere.....

Everything has a **shape** to identify,
a size to **measure**,
an amount to **count**
or **statistics** to examine.





2024 GCSE Results

This year we achieved an **outstanding** set of GCSE results – well above the national average!!

7 - 9 (A - A*) 34%

5 - 9 (C/B - A*) 67%

4+ (C - A*) 83%

*Well
done
on your
GCSE
results*



Examination Specifics:

Exam Board: Pearson Edexcel

Mathematics: 3 Papers worth 80 Marks each

Time allowed: 1 hour 30 minutes

- **Paper 1:** Non-Calculator **Date:** Thursday 15th May 2025
- **Paper 2:** Calculator **Date:** Wednesday 4th June 2025
- **Paper 3:** Calculator (problem solving and applying)
Date: Wednesday 11th June 2025

All the Mathematics GCSE exams are in the morning

- **NO formulae** sheets given in the examinations
- Formulae must be learned!

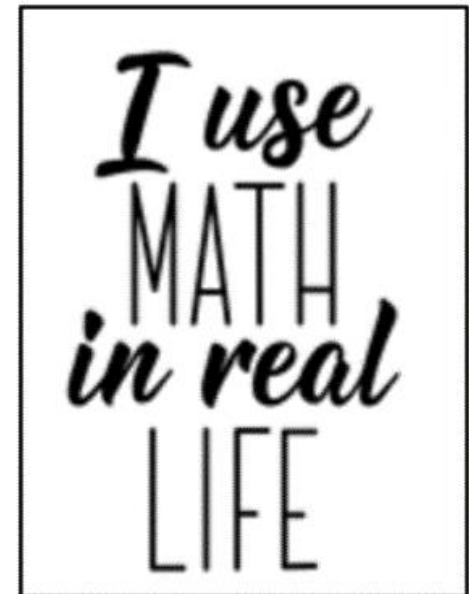


New This Year

Functional Skills Certificate

"To enhance the opportunities and outcomes for all students and ensure that every student leaves The Sacred Heart with a recognised maths qualification, we encourage selected students to study for the **Functional Skills Certificate in Maths.**"

This qualification is assessed at various points within the school year.





New This Year

Level 2 Extended Mathematics Certificate

To encourage our students to dive deeper into the world of mathematics, we are delighted to offer selected students the opportunity to study for the **New Edexcel Level 2 Extended Mathematics Certificate**.

“Extension **NOT** Acceleration”

- **Paper 1: Non-Calculator Date:** Thursday 12th June 2025
- **Paper 2: Calculator Date:** Wednesday 18th June 2025

Time allowed: 1 hour 15 minutes (75 minutes)



What you will get:

- Excellent Maths teaching in lessons with an additional lesson on Thursday afternoons
- Formula sheets for practice
- PiXL “Aiming for” booklets
- Access to online sites:
- SharePoint
- MathsWatch
- Collins Online Hub
- Departmental Intervention
- Maths Buddies and Prefect-led sessions



What we expect from you

In lessons:

- Be on time, in the right uniform and with the correct equipment!
- Maximise every learning opportunity

Out of lessons:

- Complete all homework tasks
- Catch up on any work missed
- Solve as many **maths** problems as you can!



Final words: There is no substitute for hard work



Your success is your responsibility:

- Your exam grade is achieved on the day of your exams
- No coursework or essays!
- It is based completely on the number of marks

“A **problem** a day keeps the **zero's** away..”

“All marks are **equal**, but some are **more equal** than others...”

The Sacred Heart Language College

English

Ms Di Lullo





English Literature Edexcel

Monday 12th May 2025 (provisional date) –around 25 school weeks away

Paper 1

- *Macbeth*
 - Analysis question
 - Whole text question
- *An Inspector Calls*

Paper 2

- *Jekyll and Hyde*
 - Analysis question
 - Whole text question
- Poetry comparison - taken from the examination board's anthology
15 poems (relationships)
- Unseen poetry comparison



English Literature Edexcel

Know your texts-be their friends-know them inside out:

Plot-sequence of events: think of texts in terms of a flow chart/Freytag's Pyramid. Make connections to understand how each event relates to another.

Characters: what do they do, how do they evolve, what do they symbolise?

Themes: big ideas across the text. What is the writer wanting the reader/audience to think or feel about these ideas?

Methods: characterisation, imagery, structure, genre and form, language choices. It's important to understand the author behind the text.



English Literature Edexcel

Quotations

Short

Understand when and why they are significant in the text

Make them work



Scaffolded revision – supporting your daughter

- Plan re-reading of texts
- Past questions: talk through them/plan
- Speak in 'point' 'evidence' shapes when revising: encourage discussion with peers

Please talk about the texts weekly:

tell me about the sequence of events in....

tell me about the character in....and explain why they are important..

tell me about the setting in.....and explain why it's like this

tell me about the ending ofand explain why it ends like that

tell me about the start of ...and explain its importance

can you give me evidence or a quotation to prove this?



English Language AQA

English Language: 2 papers

Fiction and Non-fiction Unseen

Reading (50%) and Writing (50%)



English Language AQA

Know the questions: these are fixed

- Timed reading of range of non-fiction texts e.g. biographies
- Planning
- Timed writing

O-organisation (sequence, shape)

C-content (relevance, range, appropriateness for task and audience)

C-craft (voice, vocabulary, style)

Clarity, cohesive range of relevant ideas.

The Sacred Heart Language College

D. Capp

Head of Key Stage 4





Due to the digital age and the influence of smartphones, there are now more distractions than ever





Creating the right environment for effective learning is crucial



DEVICE FREE ZONE





What are effective study strategies?

The two most effective study strategies are:

Retrieval practice – this is the act of recalling information from memory. This includes self-testing and quizzing.

Spaced practice – this is spacing revision over time, the opposite to cramming!



Retrieval Practice

What is
retrieval
practice?



Retrieval practice focuses on getting information out of the memory.

Through the act of retrieval, which involves recalling information through writing or verbally, the memory is then strengthened.

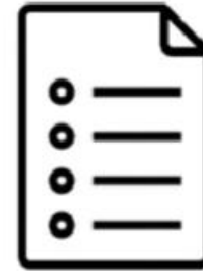


Retrieval Practice Strategies

Write it ... write down everything you can recall about life in the WW1 trenches.



List it ...list keywords and adjectives linked to life in the WW1 trenches.



Draw it ... sketch an illustration of a WW1 trench.

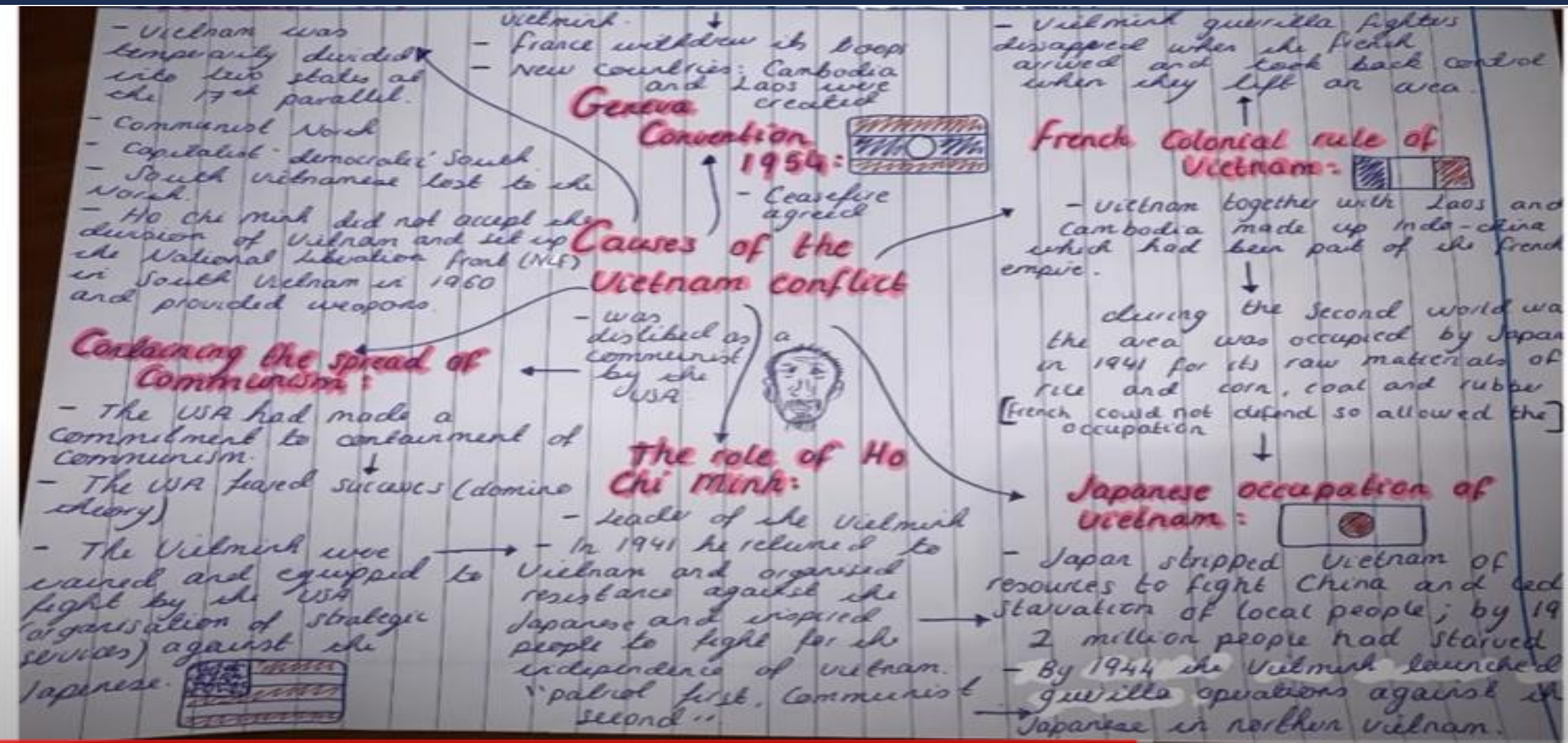


Say it ... explain to your partner how life was difficult in the WW1 trenches.





Brain Dumping is writing down everything you can remember from memory – you only need a pen and paper!





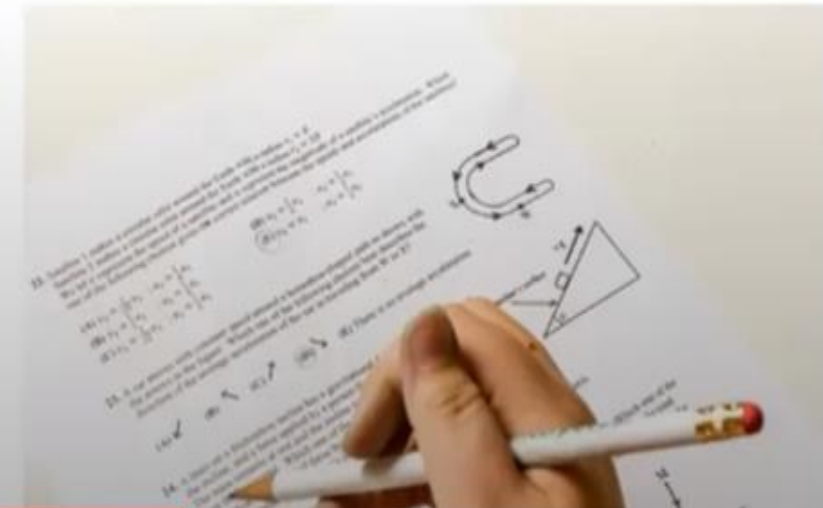
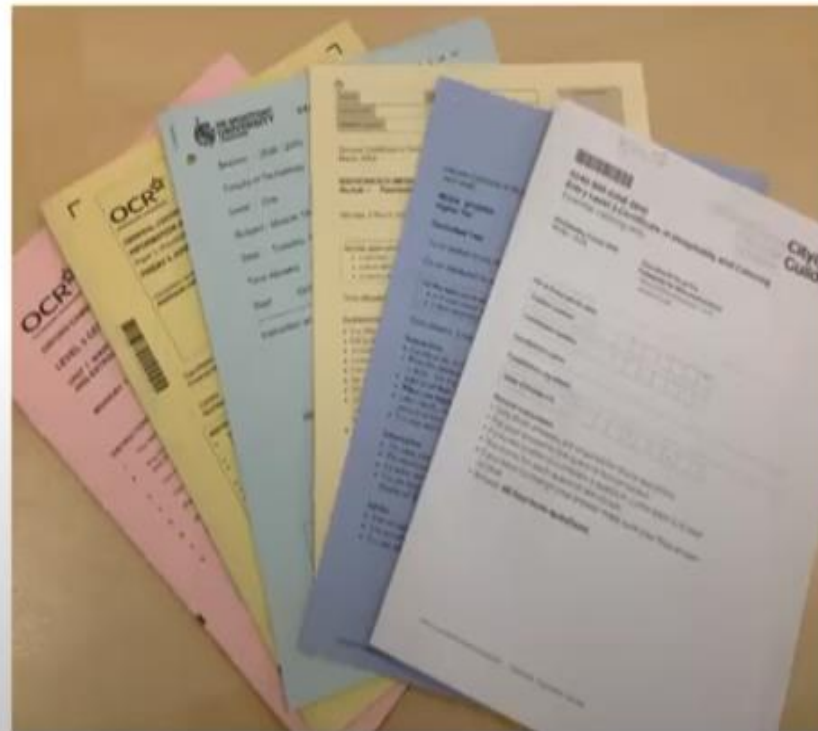
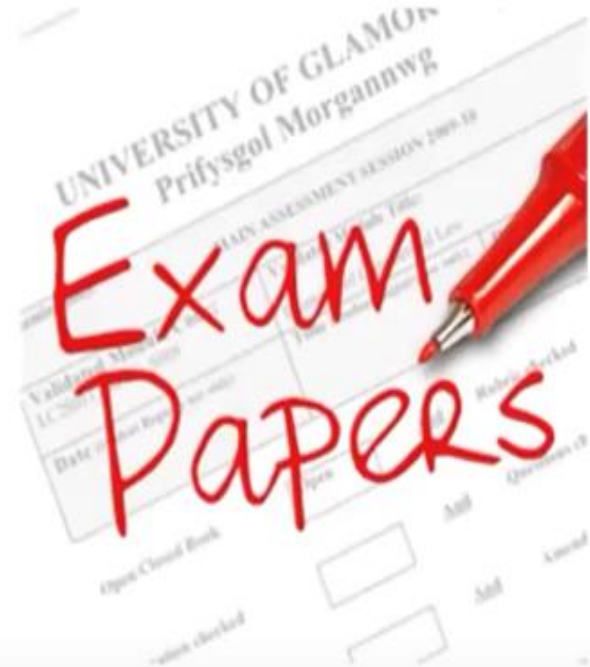
Flashcards – should have one question and one answer

What was the
Weimar Republic?

A new system of
government that did
not include a Kaiser or
any other form of monarch.
It was a republic.



Practice under timed conditions will be highly beneficial





What is spaced practice?

5 hours revision would be better spread out **over 5 days** than 5 hours in one day .



Spaced Practice Principles

- 1: Start studying early.
- 2: Spread out over time.
- 3: Little and often.
- 4: Avoid cramming!
- 5: Be organised.



Revision timetable

| | Monday | Tuesday | Wednesday | Thursday | Friday |
|---------------------------|--------|---------|-----------|----------|--------|
| Registration | | | | | |
| Lunch time | | | | | |
| After school/ Period 4 | | | | | |
| 4:00 – 4:30 | | | | | |
| 4:30 – 5:00 | | | | | |
| 5:00 – 5:30 | | | | | |
| 5:30 – 6:00 | | | | | |
| 6:00 – 6:30 | | | | | |
| 6:30 – 7:00 | | | | | |
| 7:00 – 7:30 | | | | | |
| 7:30 – 8:00 | | | | | |
| 8:00 – 8:30 | | | | | |
| 8:30 – 9:00 | | | | | |



Remember:

- Learning happens over time
- Forgetting is part of the learning process
- Retrieval practice shows what we know and don't know



GCSE Exam Boards

- **Edexcel** - English Literature, Maths, History, Drama, Art, Music
- **AQA** - Combined Science (Trilogy), English Language, RE, Biology, Chemistry, Physics, DT, Food Prep
- **OCR** - Computing, PE, Classical Civilisations
- **WJEC** - Geography



The best
preparation
for tomorrow
is doing your
best **today.**



SharePoint

General Advice and Information



Post 16 options and pathways



CV's



Facts and figures about the job market



The Sacred Heart Language College

What to do now

Mrs Williams





What to do now

- Act on the advice given this evening
- Get organised
- Read the information on SharePoint and Teams
- Look at sixth form and college websites and attend their open day/evening events
- Find out when the deadlines for applications are but complete them ASAP
- Pupils fill in as much information as they can on applications and then pass these on to their form tutor to be completed
- Keep your options open and have a back-up plan



What to do now

- Year 11 Teams
- PCT – Future Choices
- Assemblies
- SharePoint
 - Important Information → Careers
- 'Choices' magazine
- Careers Workshops
- Trustworthy websites:
 - Careerpilot
 - National Careers Service
 - Informed choices



Important Dates

- Progress 1: 25th October 2024
- PPEs: 25th November-11th December 2024
- Saturday Revision Workshops: January 2025
- Progress 2: 17th January 2025
- Parents' Evening: 23rd January 2025
- PPE 2: 4th – 7th March 2025
- Progress 3: 21st March 2025
- Targeted Parents' Evening: 31st March 2025
- GCSE Exams start: 8th May 2025
- GCSE Results day: 21st August 2025





The following academic support is on offer:

- **Supervised Study sessions 3.15pm – 4.30pm:** Every Tuesday, Wednesday and Thursday in S11.
- **Interventions for Science and Food Tech** – every Tuesday after school (invitations through subject teacher)
- **Maths intervention** – every Wednesday after school (invitation through subject teacher)
- **Friday – Period 7.** A different subject each week in the lead up to PPE1



The Key to Success



The Sacred Heart Language College

Wellbeing





Healthy lifestyle

- Physical and mental health.
- Well balanced diet.
- Drink water – keep hydrated.
- Exercise.
- Sleep.
- Mobile phones and social media.
- Talking to friends and family.
- Asking for help when needed



